

FOCUS PRODUCTS



taegutec.com



Contents





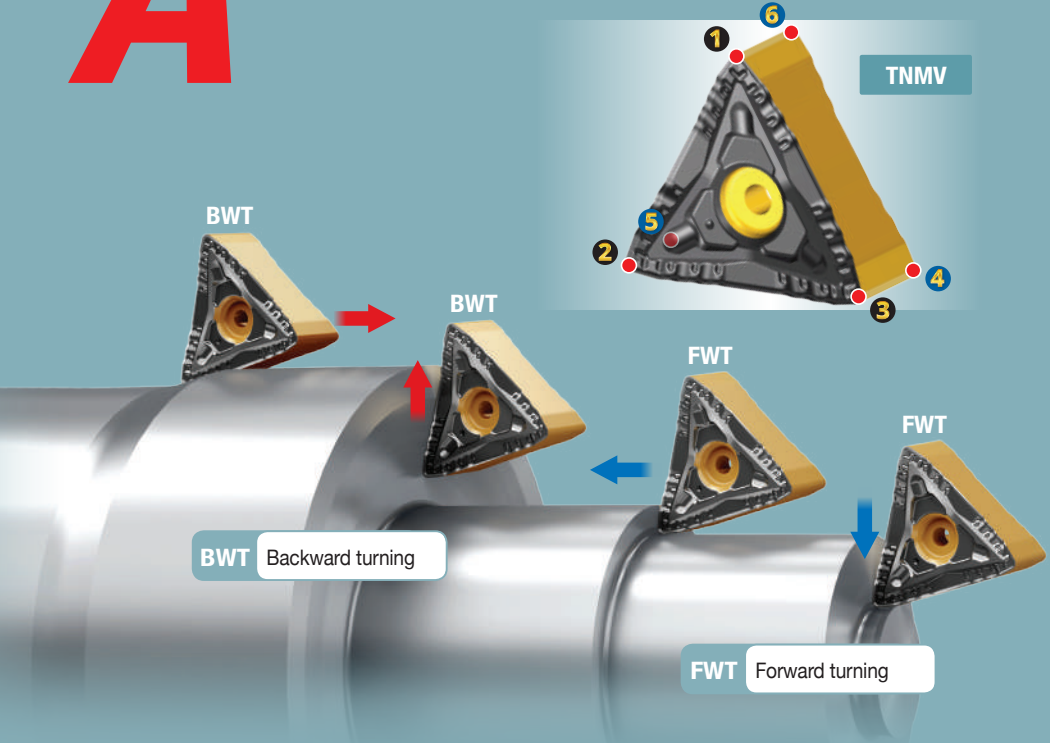
Turning	WINTURN ————— 4
	POSSTURN ————— 5
	WINSWISS ————— 6
	MULTITURN ————— 7
	HUSHBORE ————— 8
RHINOMTURN ————— 9	
Parting & Grooving	WINCUT ————— 10
	WINGROOVE ————— 11
	QUADRUSH ————— 12
	VT-CLAMP ————— 13
Drilling	DRILLSPEED ————— 14
	DRILLRUSH ————— 15
Milling	WIN4FEED ————— 16
	WINMILL ————— 17
	CHASE8MILL ————— 18
	MAXITANG ————— 19
	CHASE8SPEED ————— 20
	CERAMICSPEED ————— 21
	FINEBARREL ————— 22
MAXIRUSH ————— 23	

WINTURN

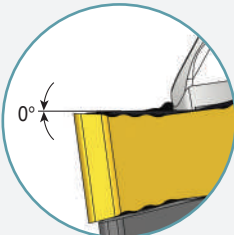
ADVANCED MACHINING

A

Multi-Cutting Edge Bi-Directional Turning Insert

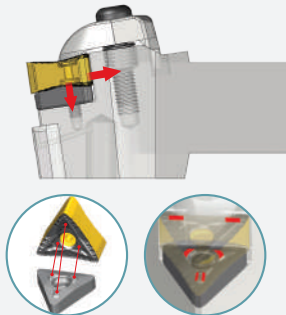


01 Positive Insert's Cutting Edge

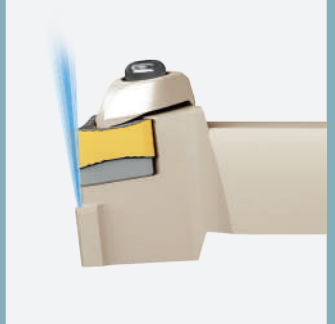


TNMV insert

02 Unique Rigid Captive Clamping



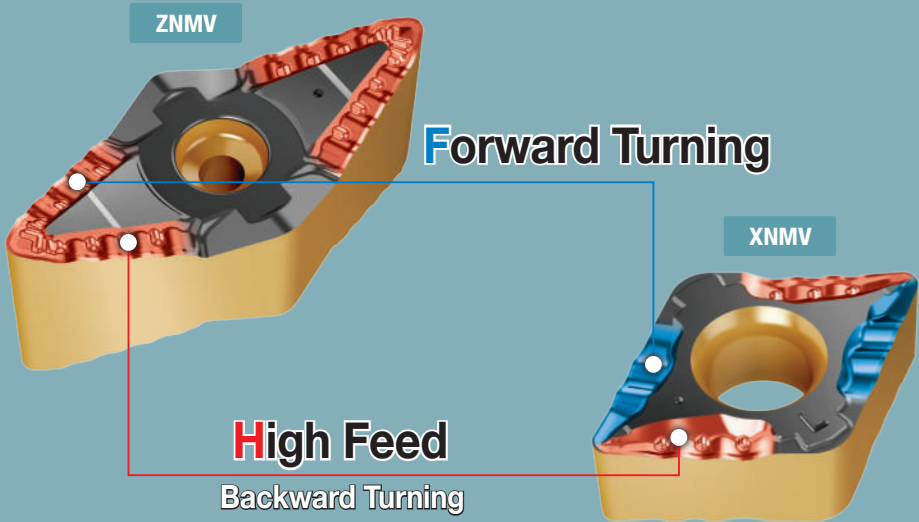
03 High-pressure Coolant Supply



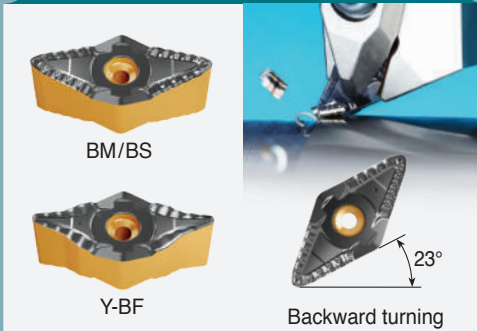
POSSTURN

DOUBLE SIDED POSITIVE TURNING

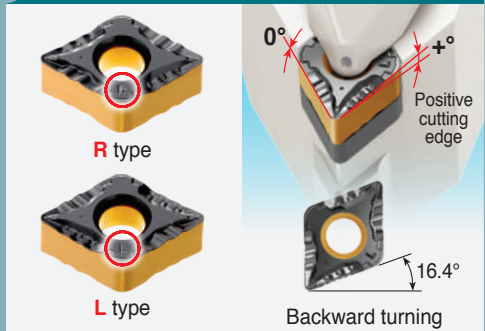
Multidirectional and High Feed Turning Application



01 ZNMV Insert - 4 Corners



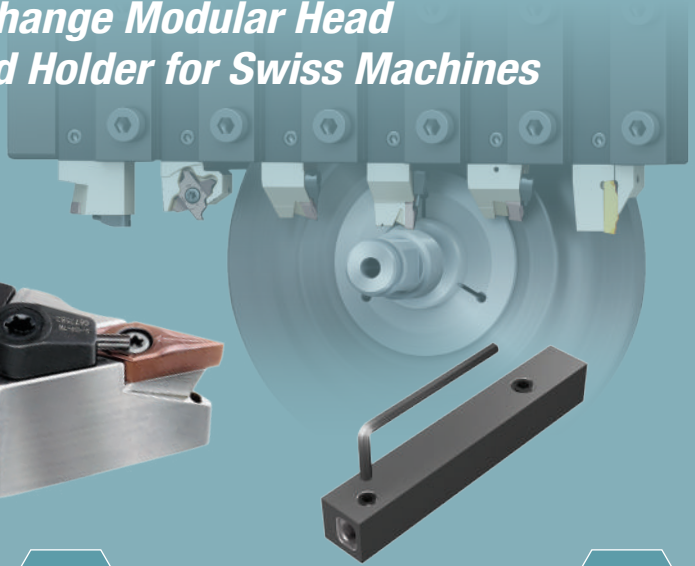
02 XNMV Insert - 4 Corners



WINSWISS

Q

**uick Change Modular Head
and Holder for Swiss Machines**

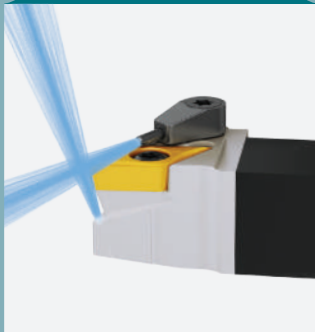


A variety of modular heads

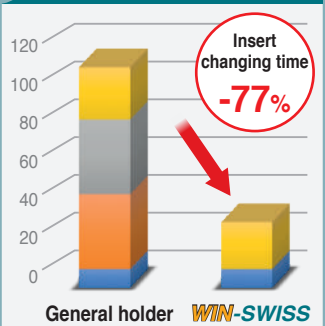
01 Easy Replacement



02 High-pressure Coolant (Top and Bottom)



03 Reduced Downtime



General holder **WIN-SWISS**

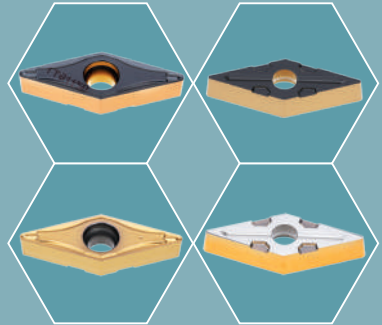
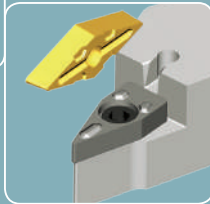
MULTI L TURN

SAFE TURNING

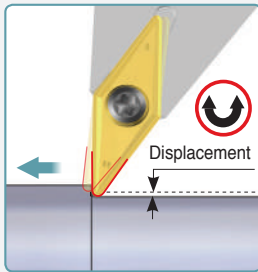
Anti-Rotating Clamping Insert



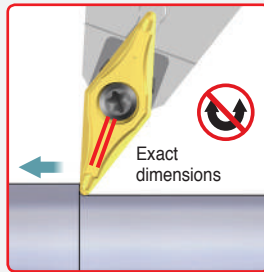
Unique and powerful clamping design



01 High Stability and Tolerances



ISO



MULTI-L-TURN

02 Powerful Clamping Design



HUSHBORE

ANTI VIBRATION BAR

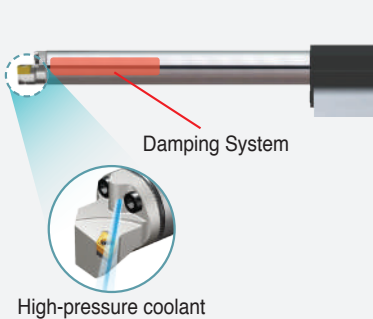
Vibration Free Boring Bar with
Exchangeable Heads

Ø16 - Ø60
7xD, 10xD

Ø80
7xD, 10xD



01 Vibration Free
Boring Bar



02 Various
Head Types



03 Square Holder
Available

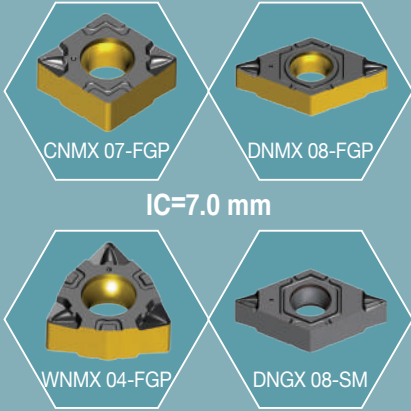


RHINO M TURN

MINI LINE



ini Double-Sided Inserts for
Low Depth Turning Less than 2 mm

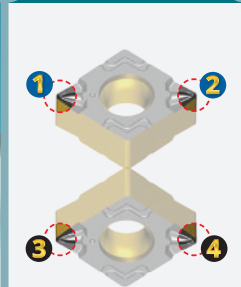


01 Small Diameter Boring



DMIN=Ø16 mm

02 Economical Insert



03 Positive Insert's Cutting Edge



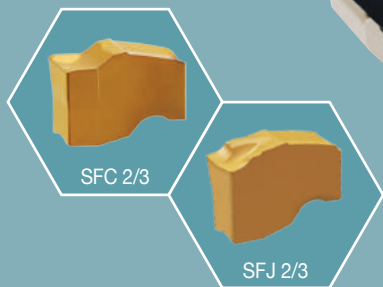
04 Miniature Industry



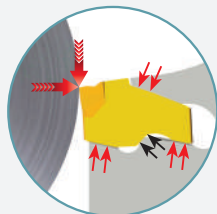
WINCUT

ADVANCED PARTING

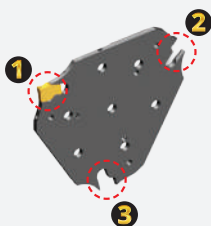
Ultra Stability and High Productivity for Parting and Deep Grooving



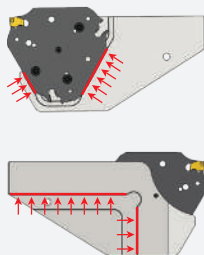
01 Reinforced and Robust



02 Economical Blade



03 Extra Stability

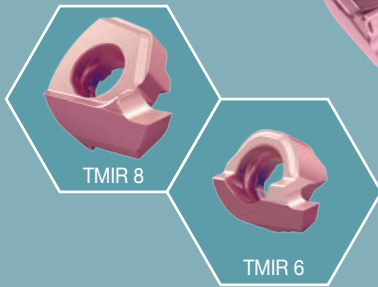


04 High-pressure Coolant



WINGROOVE

Mⁱⁿⁱ (Ø6 and Ø8 mm) Indexable Insert for Internal Shallow Grooving



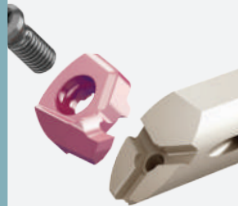
Steel Shank

Carbide Shank

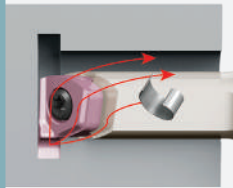
01 For Miniature Industry



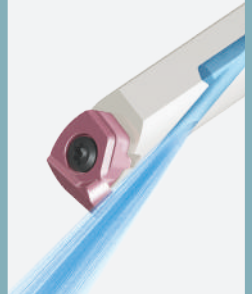
02 Unique Clamping Structure



03 Enough Space for Chip Evacuation



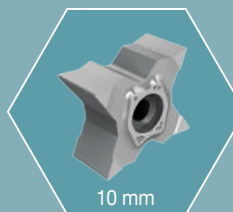
04 Internal Coolant



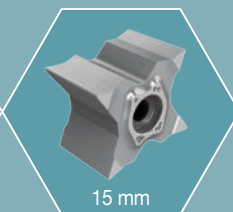
QUAD RUSH

PARTING & GROOVING

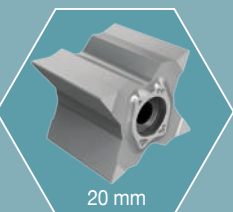
Extra **W**ide Form Grooving
with 4 Cutting Edges



10 mm



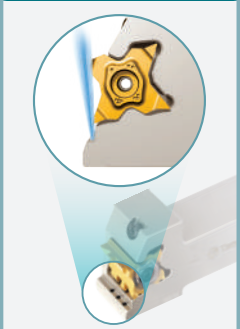
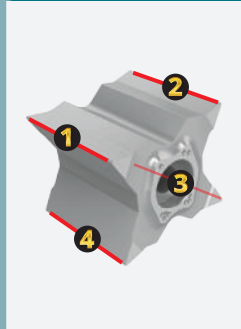
15 mm



20 mm

Blank

- 01** 4 Cutting Edges
- 02** For Specially Tailored Profiles
- 03** High-pressure Coolant
- 04** Secure and Unique Clamping Structure

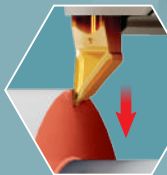
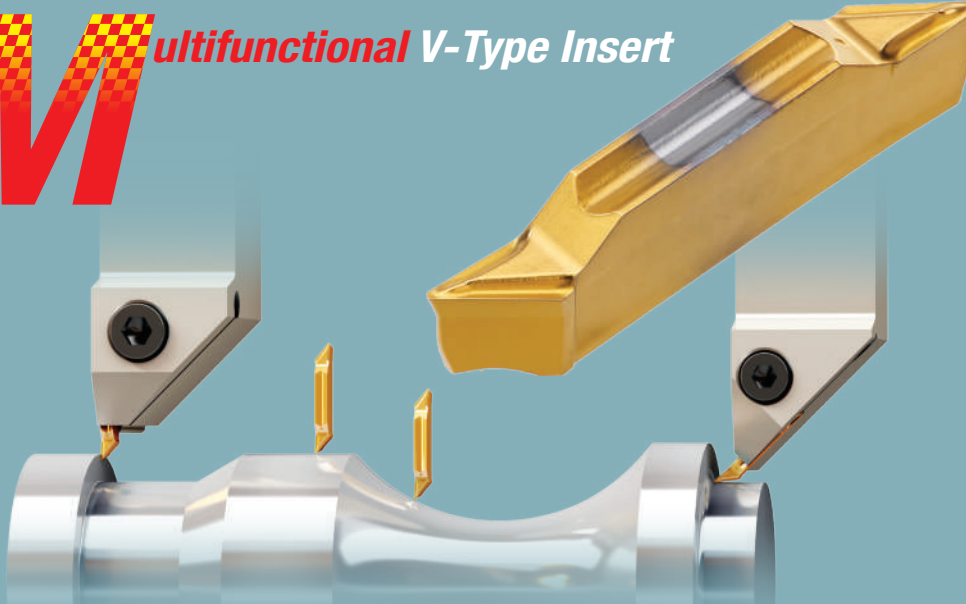


VT-CLAMP

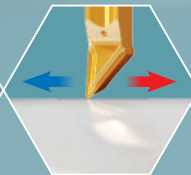
V TURN



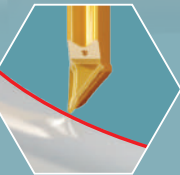
multifunctional V-Type Insert



Facing



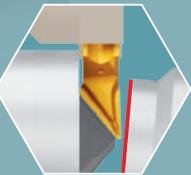
Turning



Profiling

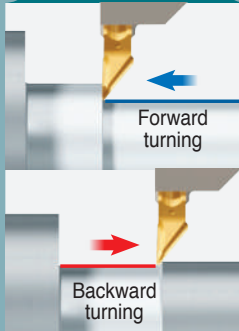


Under cut



Parting

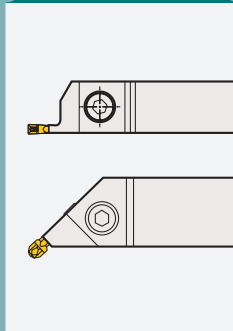
01 All-directional Turning



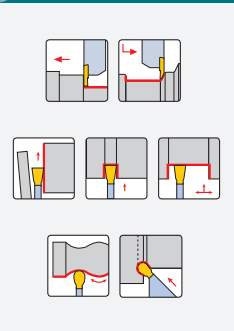
02 Optimum Chip Breaker



03 Use Standard Holder



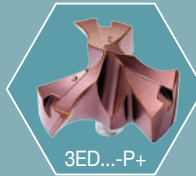
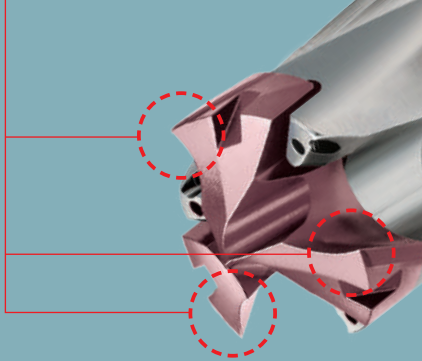
04 Multiple Applications



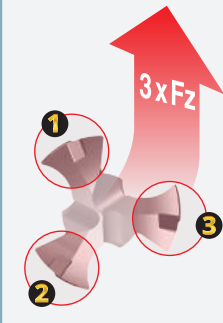
DRILL SPEED

INDEXABLE 3 FLUTE

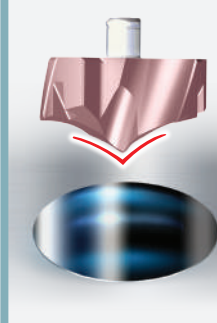
Effective Cutting Edges
Head-Changeable Drills



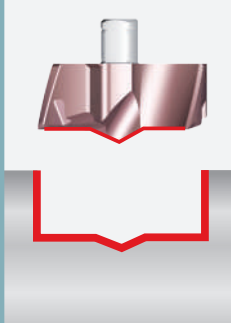
01 High Productivity



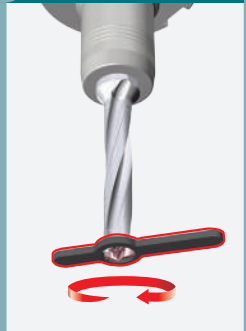
02 Premium Hole Quality (P+)



03 Flat Bottom Hole (F)



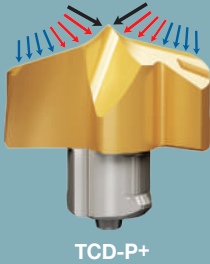
04 Quick Change System



DRILL RUSH

RUSH 2 FLUTE

P+ Self-Centering Drill Heads for Premium Hole Machining



TCD-P+

WINDRILL



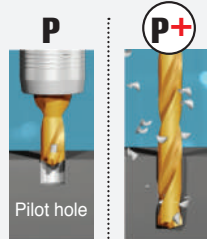
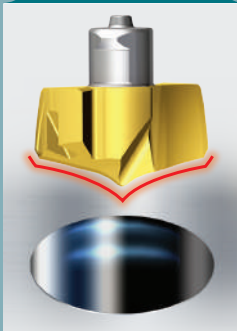
TCD-P

Ø4-5.9 mm



Ø4-25 mm

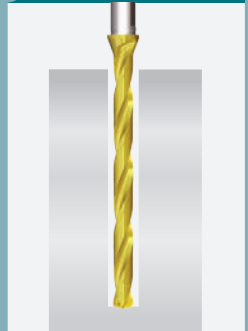
- 01** Premium Hole Quality (P+)
- 02** High Productivity
- 03** Reduced Set-up Time
- 04** Up to 12xD



Pilot hole

2 process drilling

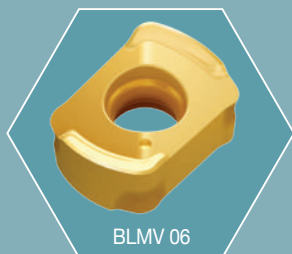
1 process drilling



WIN4FEED



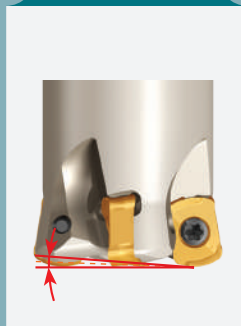
Higher Ramping Angle with Secure Clamping for Improved Productivity



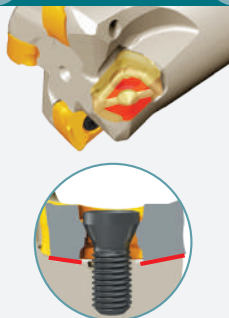
BLMV 06



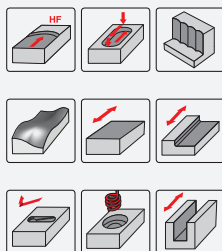
01 High Ramping Angle



02 "V" Shape Bottom Design



03 Various Applications



04 High Positive Rake Angle



WINMILL

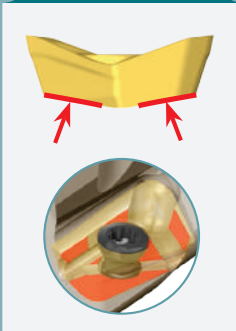
ADVANCED MACHINING

90°

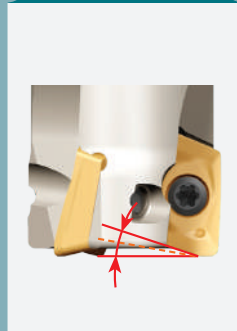
Next Generation Shoulder Mill with Strong Clamping and V Shaped Bottom



01 "V" Shape Bottom Design



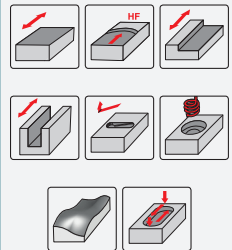
02 High Ramping Angle



03 Super High Positive Rake Angle



04 Various Applications



CHASE 8 MILL

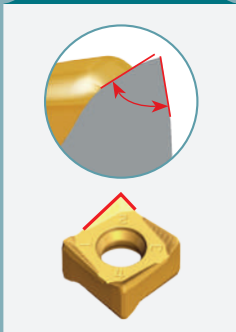
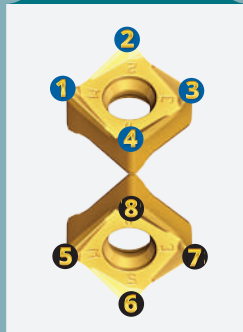
90° FACING & SHOULDERING

90

Shoulder Milling with
Economical 8 Cutting Edge
Square Insert



- 01** Most Economical Shoulder Mill
- 02** High Positive Rake Angle
- 03** Minimal Mismatch on Multi-step Walls
- 04** High Productivity with More Teeth



MAXITANG



Quick Changeable Head for Multiple Machining



LXHU 05

LPHU 05

LPKU 05



Slotting



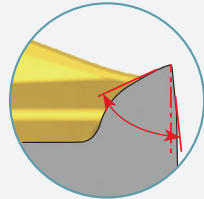
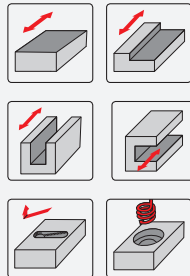
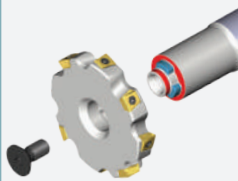
Facing

01 No set-up Time

02 High Productivity with More Teeth

03 Various Applications

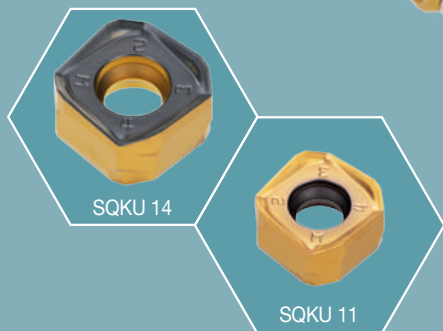
04 Reinforced Cutting Edge



CHASE & SPEED

FACING & HIGH FEED

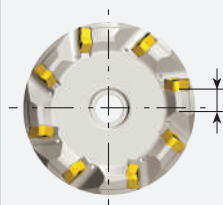
H High Feed and Face Milling with Strong Cutter Body for Improved Productivity



01 One Type Insert
for 45° and 20°



02 Strong
Body



03 Excellent Chip
Evacuation



04 Reinforced
Cutting Edge

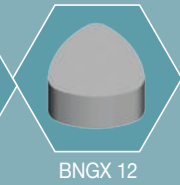
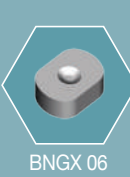


Reinforced edge
optimized for high feed
machining

CERAMICSPEED

HARDPART & EXOTIC MATERIALS

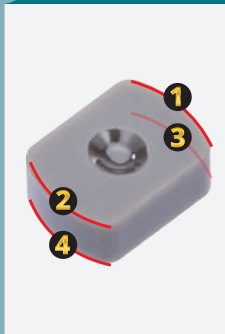
H SiAlON Ceramic Milling for High-Speed Machining of Super Alloys



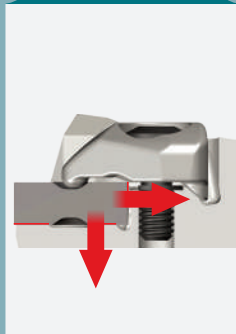
01 Ultra High-speed and High Feed



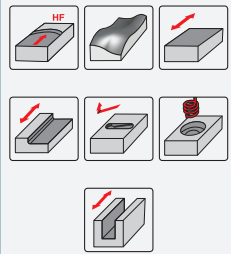
02 Strong Double-sided Insert



03 Rigid Clamping



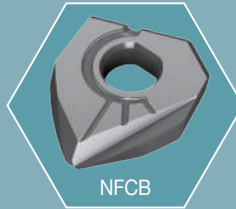
04 Various Applications



FINE BARREL

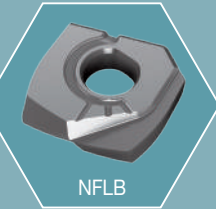


High Productivity in
Finishing Applications with Larger
Radius Insert



NFCB

Ø8-Ø30



NFLB

Ø12-Ø30



01 Max. Pitch Distance

Round Insert
Pitch=x1



NFCB
Pitch=x3



Round Insert
Pitch=x1



NFLB
Pitch=x2.5



02 Two Types of Applications



Barrel R



Tip R

03 Lens and Barrel Combination



Barrel R



Lens R

04 Compatible Holders - FINE-BALL



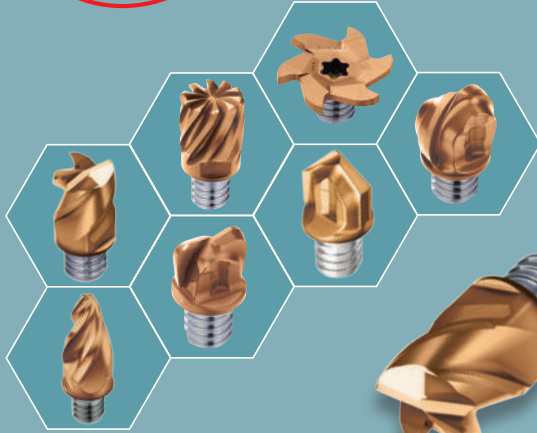
Diameter range: Ø8 - Ø30

MAXIRUSH

INDEXABLE SOLID HEADS



Quick Head-Changeable
Solid Carbide End Mills



01 High Productivity



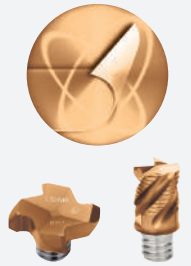
02 Excellent Accuracy



03 Multiple Applications



04 Optimized Grade



TT5543 TT5523

FOCUS PRODUCTS

Tool CutZZ

Your Knowledge Machining Link!

