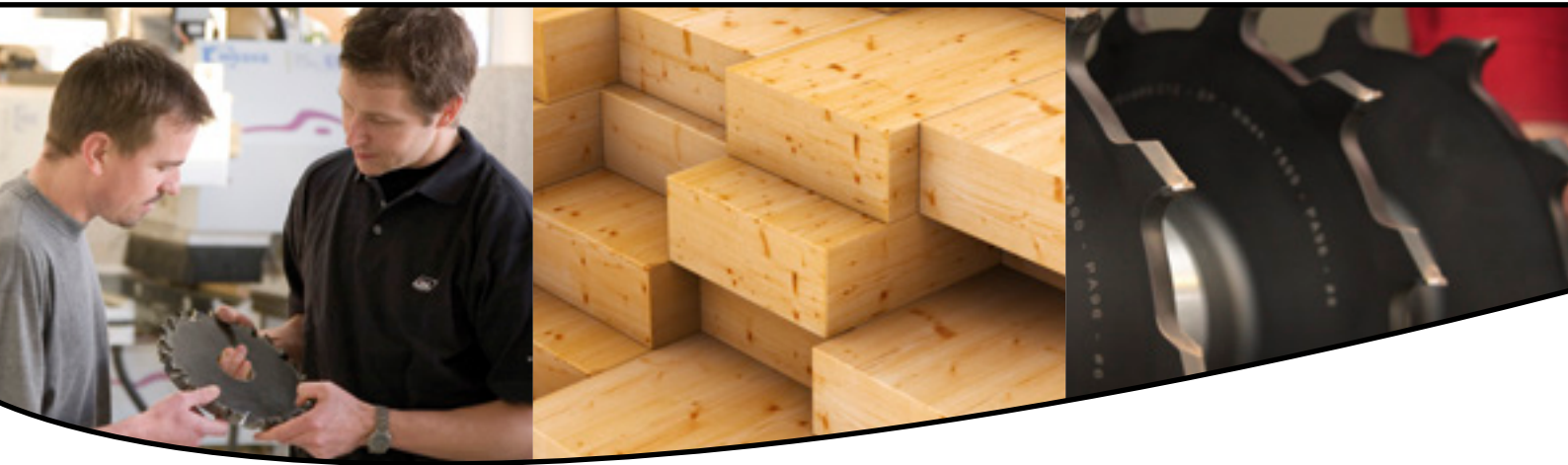



Kitchen and board furniture

Cutting tools – optimum solutions





A wide product range

We give you access to a wide range of standard tools from the world's best manufacturers – in high quality and at prices much lower than you would think.

Challenge your tool supplier

Only the results count

Manufacturing kitchen and board furniture in the most rational way poses a real challenge. A multitude of factors must come together to enable you to manufacture quality products at the lowest possible unit costs.

Your entire production process must be optimized to ensure that the combination of machinery, human resources and tools results in the best possible competitiveness.

Our job is to solve your challenges

Over many years, we have built up extensive knowledge about everything related to chip removal. Therefore, you can expect us to understand your challenges and goals, and that our counseling as well as our tooling solutions are targeted towards your products and your everyday challenges.

Step by step, we can advise you about the perfect solution for your production of kitchen and board furniture.

The right standard tools combined with specially developed solutions and our know-how about machining parameters can increase your productivity significantly.

Much more than tools

By choosing Kyocera Unimerco as your supplier, you get access to the latest know-how on production optimization, tooling and machining technology, numerous services, and, of course, a complete tooling range.

For the production of staircases, a large number of customized tools are used. Our experienced experts are ready to contribute with their special skills, and in a close dialogue with you, we create the special tools needed for your particular production process.

Besides customized solutions we offer a wide range of standard tools carefully compiled from the best manufacturers in the world. Just like the customized tools, the standard tools are characterized by high quality matching the needs and requirements of our customers.

Cabinets, drawers, cabinet doors

Machining of board workpieces on through-feed machines



Rough cutting

When you use low-noise UM main saw blades and scoring saw blades with optimized tooth geometry for rough cutting, you achieve:

- low noise and, consequently, a better working environment
- better cutting quality and longer tool life



Format cutting

No matter if you need to machine soft or hard wood lengthwise or crosswise, coated chipboard or coated MDF, you will find the solution for your specific task in our standard range.

You can achieve benefits such as:

- the most economical solution when you choose the right hogger from our complete range
- higher capability, allowing you to meet all demands and needs of your customers





Drilling

Get access to a vast selection of stocked drills, most of them in two different qualities, and achieve:

- lower inventory costs and, consequently, lower production costs
- less scrapping, because you use the perfect drill for the task



Folding cutting

HW- or DP-brazed cutters for folding cutting of drawers which are manufactured on basis of your material and machinery. You get benefits such as:

- less waste in production and fewer complaints
- higher feed rate and, consequently, increased capacity



Drawers & cabinet doors

Machining of solid wood workpieces on CNC and through-feed machines



Saw-cutting

With carbide circular saw blades you get the optimum solution for your specific task, no matter if your challenge is working environment, tear-out or tool life.

You will also achieve:

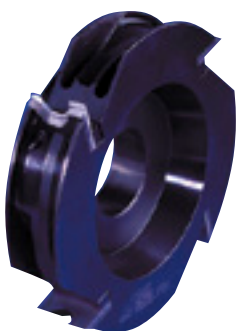
- less post-processing in the cut material
- fewer scrapped workpieces and, consequently, better manufacturing economy



Moulding and profiling

We have long-standing experience manufacturing customized solutions for special customer tasks. You can benefit from our experience in your production. So no matter what your task looks like, you can have us solve it, thus achieving:

- increased feed rate based on the correct cutting data
- extremely long tool life because you are using the right cutting material



Tenoning

When you select your tenoning tool, it is important that many parameters are taken into account, e.g. feed rate, rotation speed and material. You can safely leave those choices to us, thus achieving benefits such as:

- high flexibility, since the solution is always based on your possibilities
- lower unit costs due to higher feed rate



Drilling

Get access to a vast selection of stocked drills, most of them in two different qualities, and achieve:

- lower inventory costs and, thus, lower production costs
- less scrapping, because you are using the perfect drill for the task



Cabinet doors

Machining of solid wood workpieces on CNC and through-feed machines



Rough cutting

Wide range of main saw blades and scoring saw blades in HW and DP with the latest technology from leading European suppliers ensures that your cutting remains optimal.

You will also achieve:

- longer tool life and higher feed rate due to special tooth pitch and flute geometries
- uniform quality due to small tolerances at our suppliers of quality blades



Milling

New technology offers you a previously unseen level of milling, which means great finish when performing conventional milling in edgework and cross-cut timber.

Large axial shear angle increases both feed rate and cutting quality, giving new possibilities for woodworking companies.

Benefits include:

- superior cutting quality and minimal tear-out on cross-cut edgework
- reduced processing time and, consequently, lower unit costs



Drilling

Get access to a vast selection of stocked drills, most of them in two different qualities, and achieve:

- lower inventory costs and, consequently, lower production costs
- less scrapping, because you are using the right drill for the task

Worktops

Machining of solid wood workpieces on through-feed machines



Rough cutting

When you use low-noise UM main saw blades and scoring saw blades with optimized tooth geometry for rough cutting, you achieve:

- low noise and, consequently, a better working environment
- better cutting quality and longer tool life



Moulding of slats

The perfect HW blade for moulding of slats, combined with a C5 coating, can give you a number of benefits in your production, for example:

- noise reduction, resulting in a better working environment
- minimal waste of material using the thinnest possible blade
- high feed rate and thus lowest-possible processing costs when selecting the right tooth geometry





Format cutting – double-end tenoners

The Twintec hogger consists of single segments for crushing excess material, as well as a cutting blade for the finish cut. When you select the right blade for your specific task, you achieve:

- low noise level and long tool life due to the blade and segment geometry
- high cutting quality and minimal tear-up



Format cutting – CNC

Wide range of roughing and finishing cutters allows you to solve all your tasks involving sharp edges – no matter if you are machining the underside or the top side, or both sides simultaneously. When the right tool is chosen, you can be sure that:

- the task has been solved with as little post-processing as possible
- the efficiency of your machinery is increased, and possible machine investments can be postponed or simply avoided





Good cooperation shows on the bottom line

Your competencies are the basis

You are an expert within your field, and you know all there is to know about your products. We can help you strengthen your competencies in process and tooling techniques through competent guidance and possible training of your staff.

Know-how about efficient production

We have gathered the extensive international experience of our experts and combined it with the latest know-how about tooling and processing techniques. We use this knowledge to develop new tools and advise you on possible rationalizations in your production.

Effective cooperation makes all the difference

We help you review your production, focusing on any quality issues and bottlenecks.

Solid hands-on experience and unique calculation models give you an optimum basis to decide which processes may benefit from rationalization.

Together we select the right tools for the given task, and we advise you on cutting technique, machining parameters, etc.

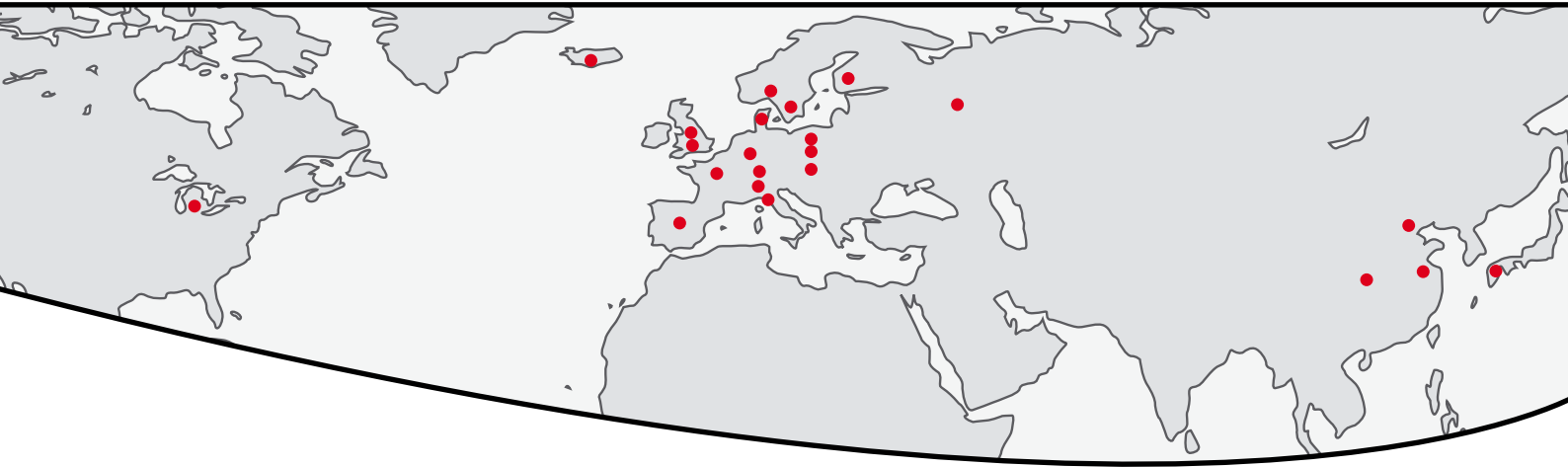
In brief, we help you achieve the quality you require at the lowest possible unit costs.

It shows on the bottom line!

KYOCERA UNIMERCO Tooling Ltd.

KYOCERA UNIMERCO manufactures, distributes and services tools for machining, primarily for the metal, woodworking, automotive, aerospace, power generation and fluid power industries. The technology centre in Lichfield focuses on effective solutions for production. The tooling concept comprises standard and customised tools, RE•NEW® tool maintenance, coating and optimisation guidance. The Sheffield branch specialises in supplying inserts, standard tools and related tool solutions to the industrial market in the UK, including the general machining, aerospace, offshore and medical industries.

The company was established in 1998, services all of the UK, and is part of the KYOCERA UNIMERCO group, founded in Denmark in 1964 and originally named UNIMERCO. In 2011, all activities were acquired by Japan-based KYOCERA. This has created an even stronger company with a larger range of products, a wide network of companies and distributors all over the world, and an ambitious growth plan.



KYOCERA UNIMERCO Tooling Ltd.

Nanscawen Road, Fradley · Staffordshire WS13 8LH · UK
Tel +44 (0)1543 267 777
Fax +44 (0)1543 267 778
umuk@unimerco.com
www.kyocera-unimerco.co.uk